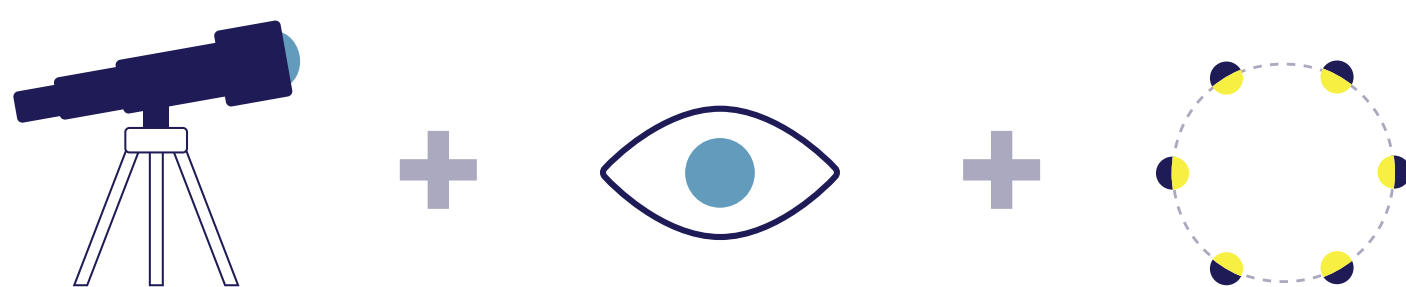


# Galileo

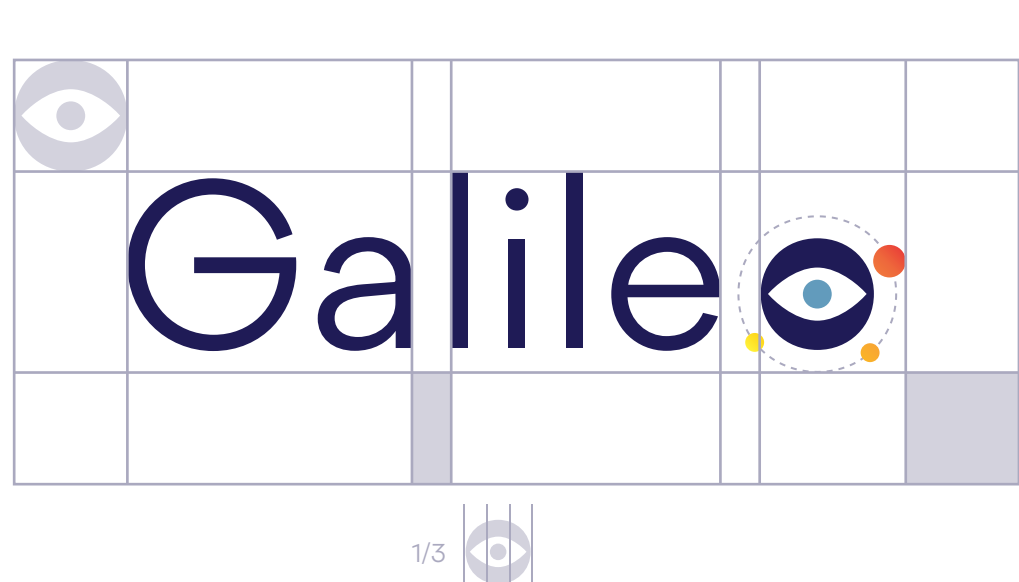
## Concept

Galileo believed in science through observation. By doing so he discovered the phases of Venus and was able to improve the telescope to study the night sky. Our back-end team observed that the acquisition engine wasn't working to its full potential. Observing and researching they were able to discover a new way to improve the engine and Galileo was born.



## White space

For practicality of use there are 2 approved versions of the logo that can be used according to specific needs.



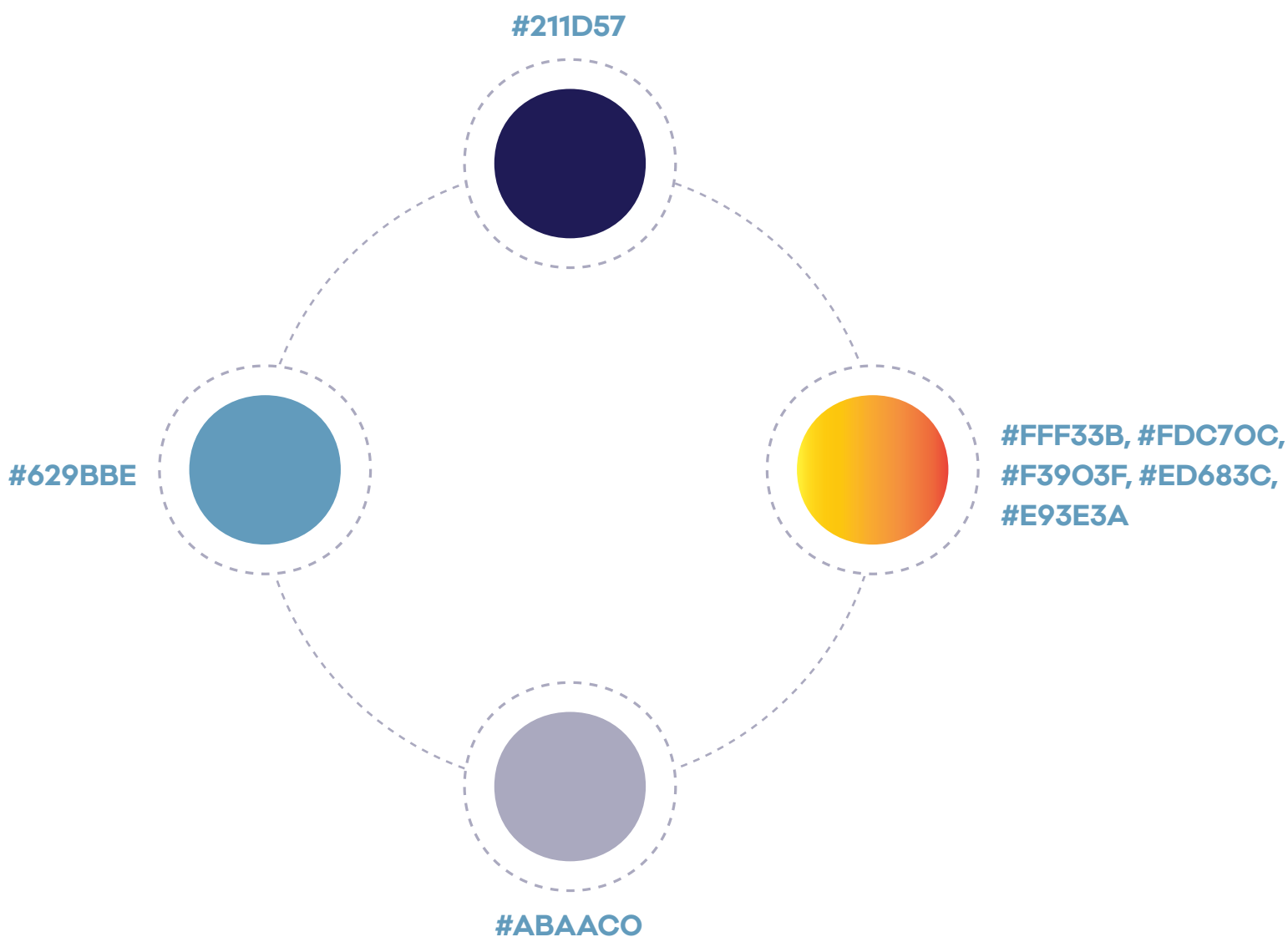
## Font

### Galano Regular

ABCDEFGHIJKLMNOPQRSTUVWXYZ  
abcdefghijklmnopqrstuvwxyz  
1234567890

## Colours

Colour depends very much on personal taste, but when it comes to brand design it becomes a powerful tool to represent a specific meaning and/or emotion over time.



### #211D57

Night sky: trust, loyalty, dependability, logic, security.

### #FFF33B, #FDC70C, #F3903F, #ED683C, #E93E3A

Stars and planets gradient: intellect, creativity, optimism, innovation, energy, confidence, power, strength.

### #ABAACO

Timeless grey: reliability, balance, intelligence.

### #629BBE

Light blue: efficiency, duty, reflection, coolness.

## Colour combinations

### Colour



### Black & White



Thanks for watching

Designed by Suzey Levis